

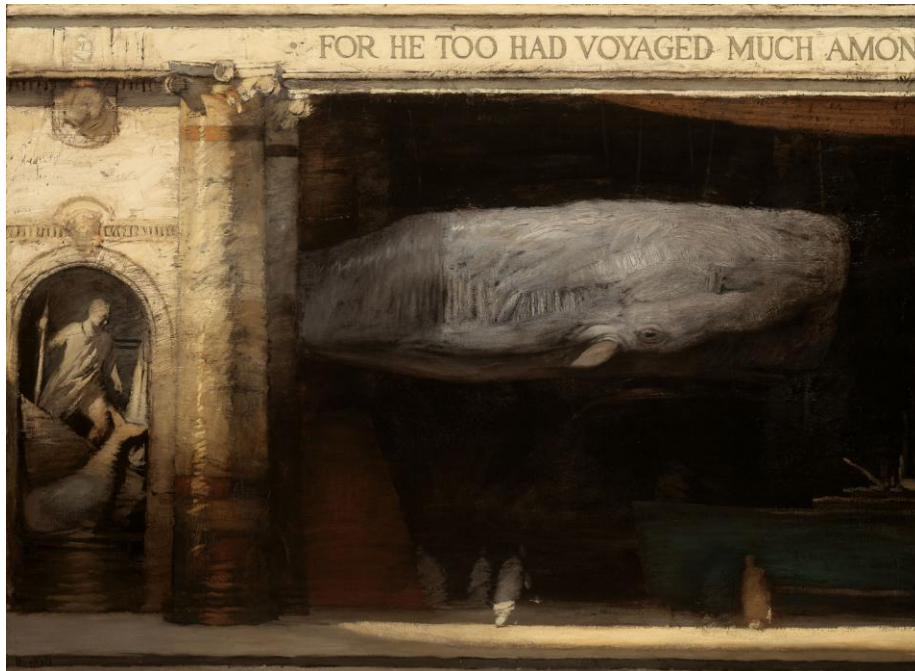
MEDIA CONTACT

Emma Jacobson-Sive
Tel (626) 568-3665 x12, emma.jacobson@pmcaonline.org

FOR IMMEDIATE RELEASE

October 16, 2011

Richard Bunkall: A Portrait
January 22, 2012 – April 22, 2012



Homage, 1997. Oil on canvas, 44 x 60 inches. Private Collection.

Pasadena, CA - The Pasadena Museum of California Art (PMCA) is proud to present *Richard Bunkall: A Portrait*, on view from January 22 to April 22, 2012. Curated by art critic Peter Frank, the exhibition surveys the paintings, drawings, and sculptures of the Pasadena-based artist and educator known for his distinct style, with its atmospheric evocation of an urban space. The exhibition looks at several of the periods through which the artist passed in his twenty-five year career before dying at 45 of ALS (Lou Gehrig's disease), highlighting particular themes and approaches as well as revealing more private aspects of the artist's oeuvre.

Described by Frank as “a modernist, not a classicist, [Bunkall was] a classicizing kind of modernist, wanting to give his modernism the weight of history rather than the lightness of a historic innovation.” Bunkall's trained his rich but muted palette and painterly approach on a broad and fanciful consideration of the urban environment, one that imagines cities first as man-made

landscapes, often seen from a bird's-eye vantage, then as complex, mysterious interiors in which improbable things are seen in improbable situations.

If Bunkall indulged his urban fantasies in his larger paintings, he marveled in his small paintings, drawings, and even sculpture over the charm of the ordinary and the pleasure of detail. He painted and sculpted single buildings and objects, studies of and variations on favorite buildings and building types that he initially saw and captured on visits to quintessential urban spaces, including New York, Paris and downtown Los Angeles, rendering them with the same poignancy in which he bathed his cityscapes.

Bunkall captured a quality found at the heart of most American metropoli: the adventure and mystery, more exhilarating than alienating, of the pre-steel "urban canyon." This exhibition looks at the many ways Bunkall conveyed the adventure and described the mystery through his practice.

Richard Bunkall: A Portrait includes more than twenty works in a various media and is accompanied by a comprehensive book surveying Bunkall's art and life, featuring essays by Frank and others.



LEFT to RIGHT: *Offering*, 1988. Wood, oil, plaster, 41 x 22 x 9 inches. Private Collection; *Old Building, Paris (for Sally)*, 1988. Wood, wax, oil, plaster, 41 x 16 x 6 inches. Private Collection.

OPENING RECEPTION

Sunday, January 22, 2012

6:00 – 9:00 pm

\$5 admission

Free for PMCA Members

About the PMCA:

The Pasadena Museum of California Art (PMCA) is dedicated to the exhibition of California art, architecture, and design from 1850 to the present. Informed by the state's rich mixture of cultures and inspired by its impressive geography, California art has long been defined by a spirit of freedom and experimentation. PMCA exhibitions and educational programs explore the cultural dynamics and influences unique to California that have shaped and defined art in all media.

Hours:

Wednesday – Sunday, 12:00 - 5:00 pm.

The Museum is closed July 4th, Thanksgiving Day, Christmas and New Year's Day.

Admission:

\$7 for Adults, \$5 for Seniors (65+) and Students with valid ID; free to PMCA Members and children under 12. Access for people with disabilities is provided.

Location/Parking:

The Museum is located at 490 East Union Street. From the 210 Freeway, take the Lake Avenue exit. Go south and take a right on Union Street. From the 110 Freeway/Downtown Los Angeles, follow the freeway until its end, then take Arroyo Parkway and turn right at Colorado, then left at Oakland to get to Union Street. Parking is available at the Museum.

PMCA Tours:

At this time, the museum does not offer regularly scheduled docent tours of our special exhibitions. However, docent tours are available to private groups for a fee of \$75. A non-refundable deposit of \$40 is due two weeks prior to the scheduled date in order to guarantee a tour. We regret that we are unable to accommodate tours for groups smaller than 10 or larger than 50 people. Before requesting a tour, please check the exhibition calendar to see which exhibitions will be available during your visit.

A discounted group rate of \$4 per person is available for groups of 20 or more, and free admission is offered to school groups of K-12 public school students. Please call to notify us at least one week in advance for these special admission rates.

For any questions or to make reservations for a tour or group rate, please call 626-568-3665 x17.

PMCA Information:

For information, the please call 626-568-3665 or visit the website: www.pmcaonline.org

###